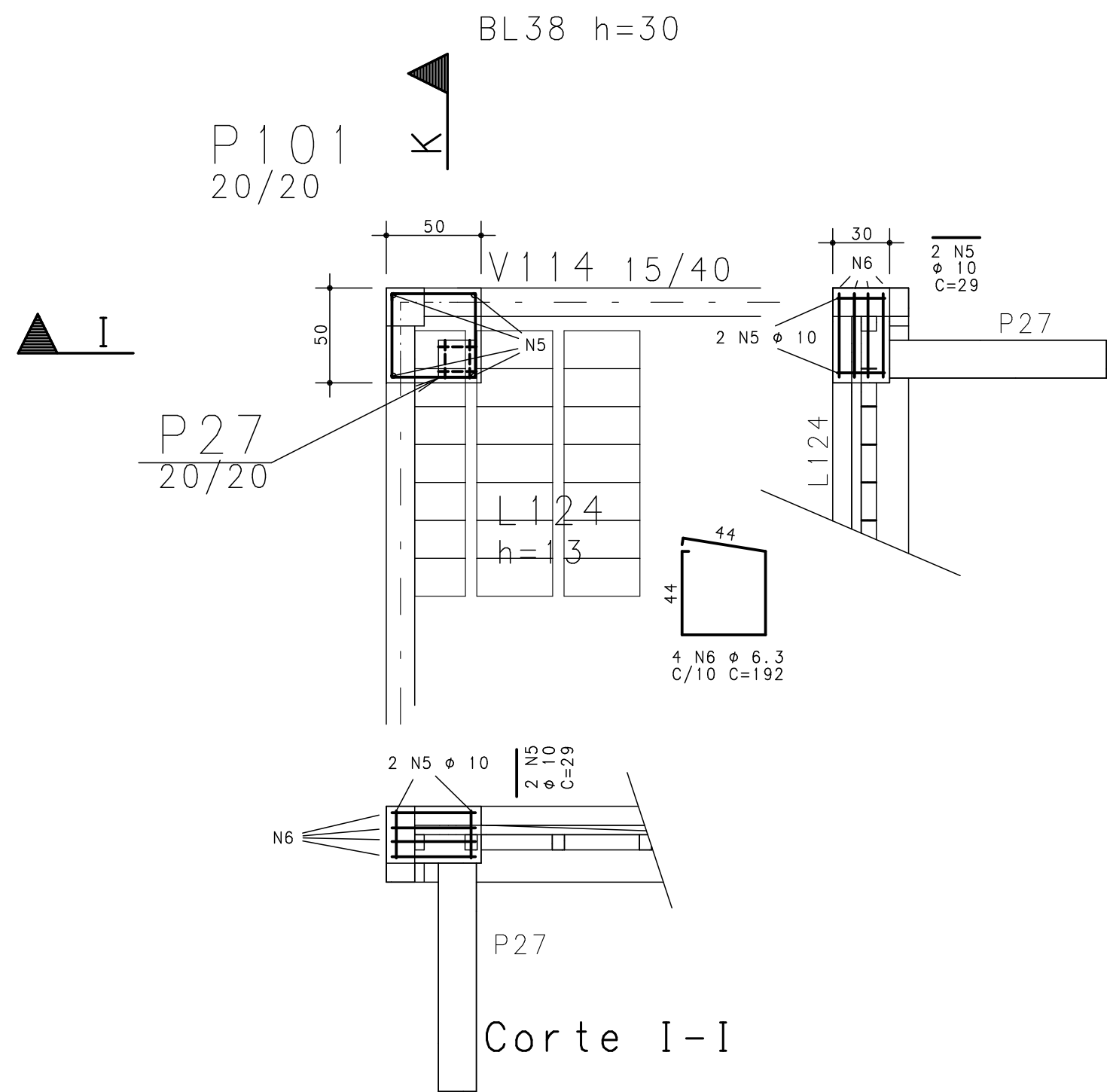
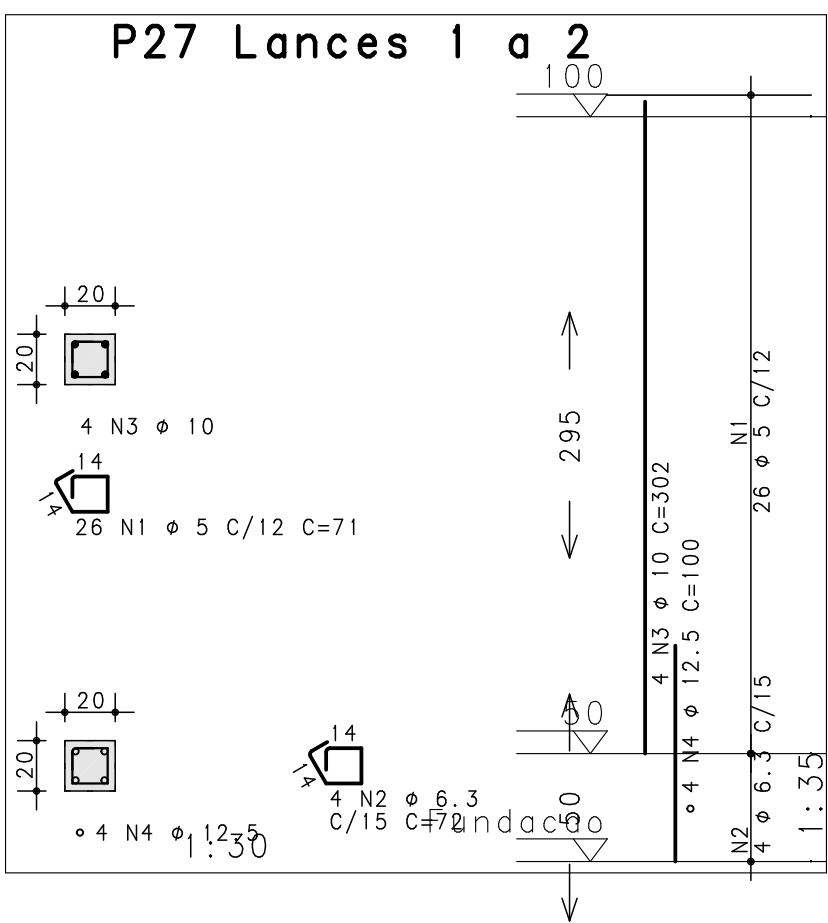
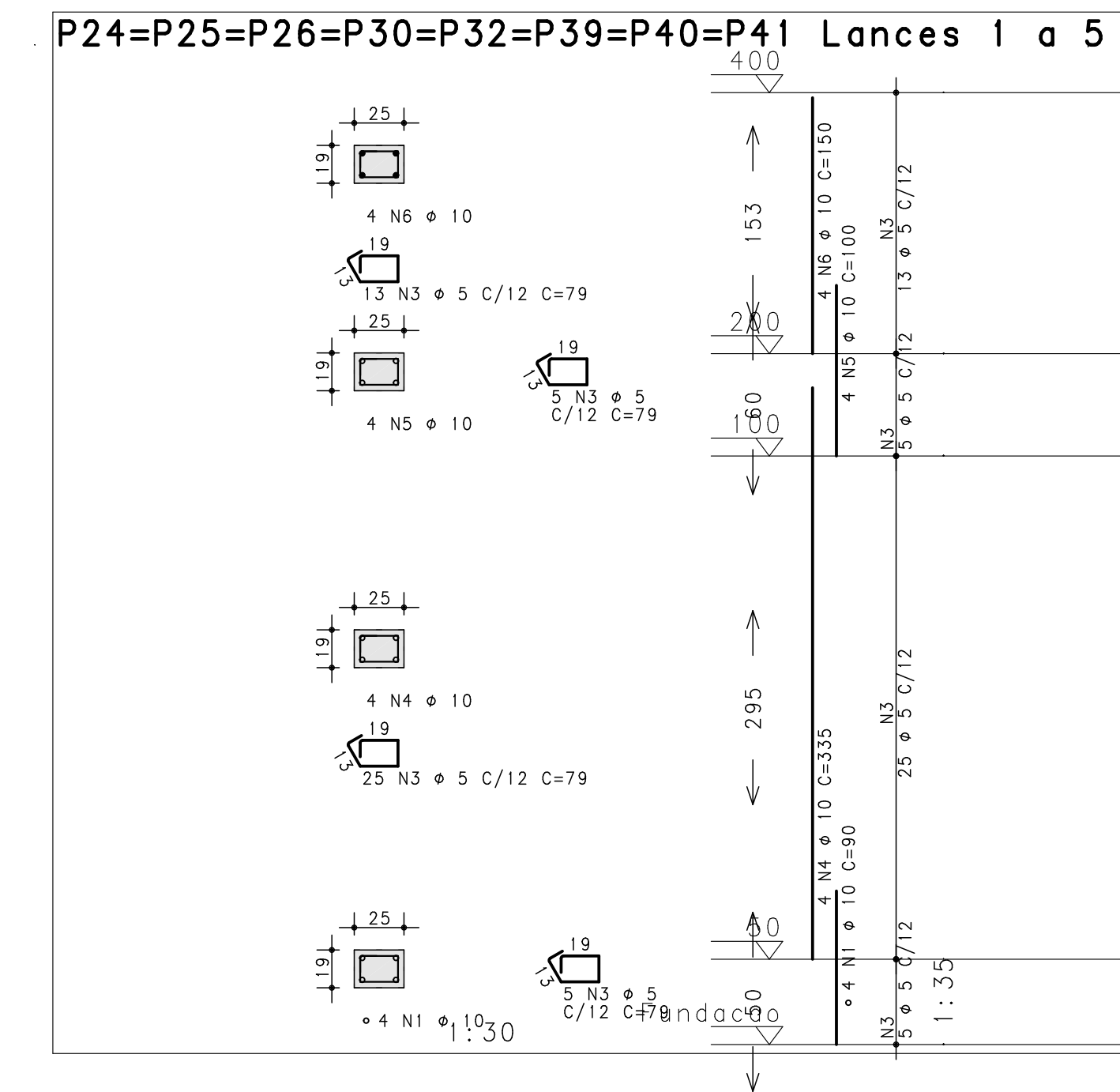
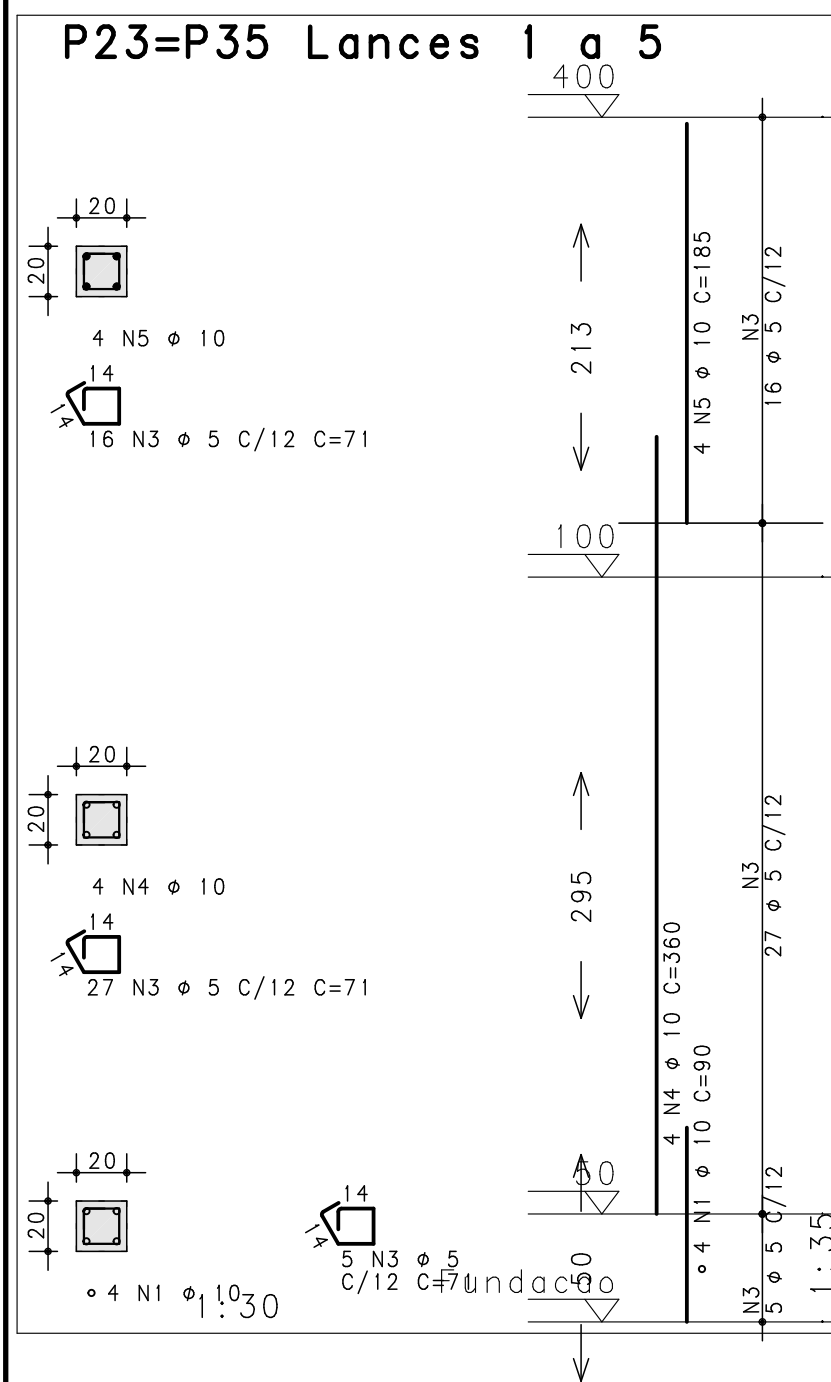
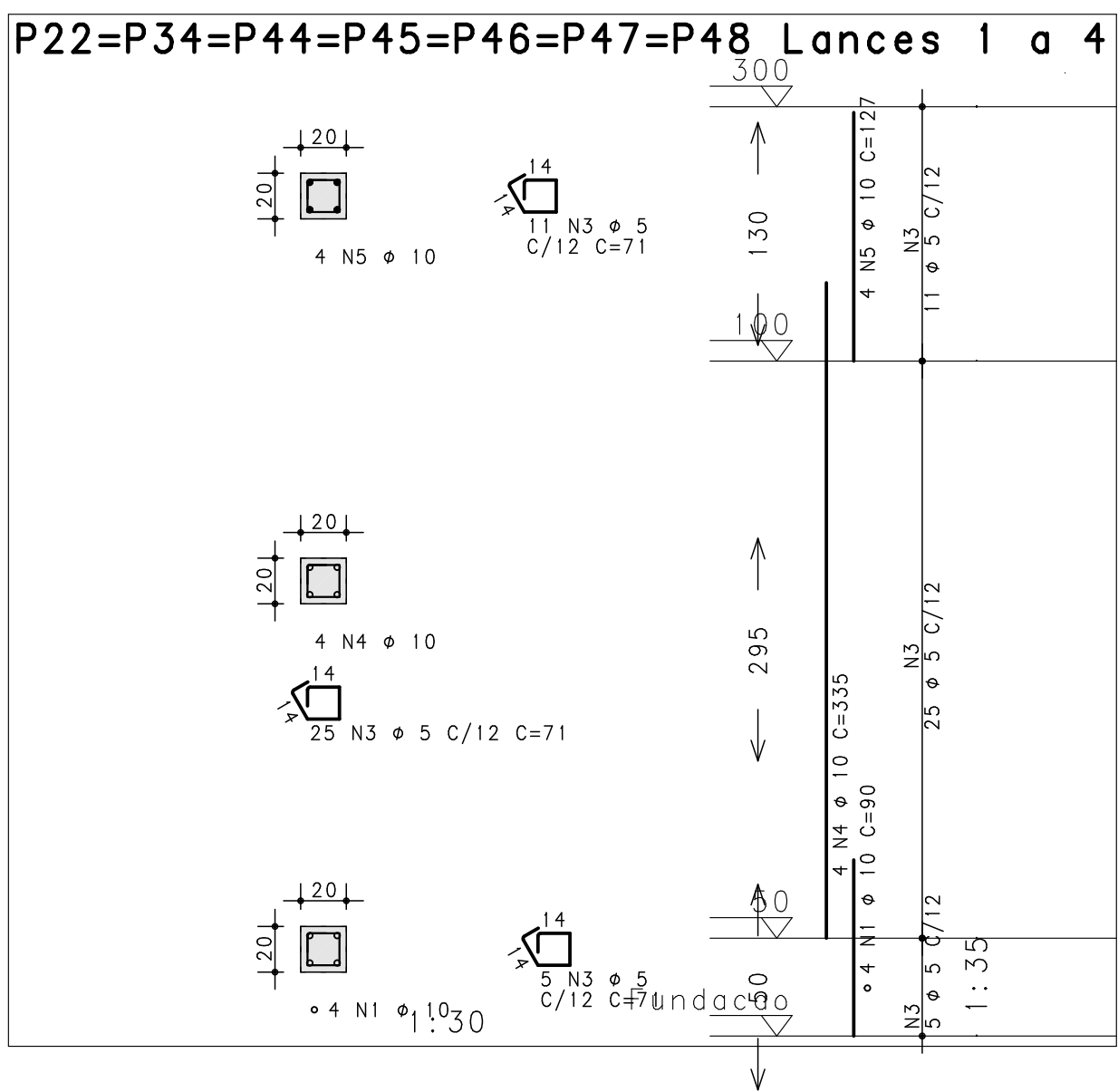
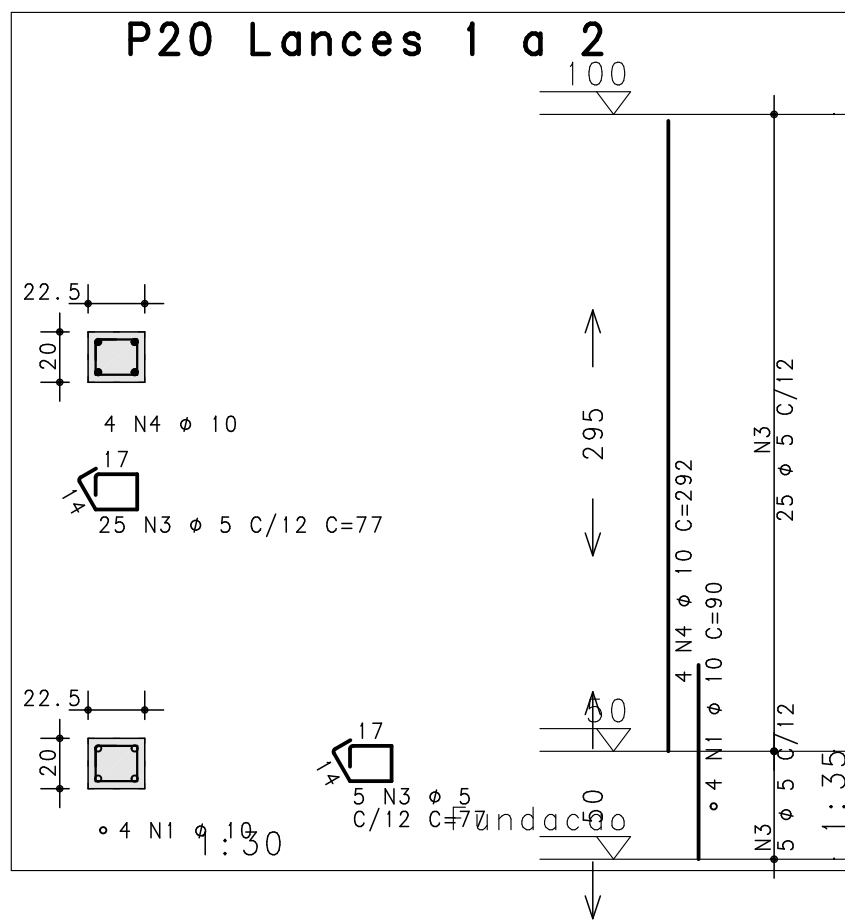
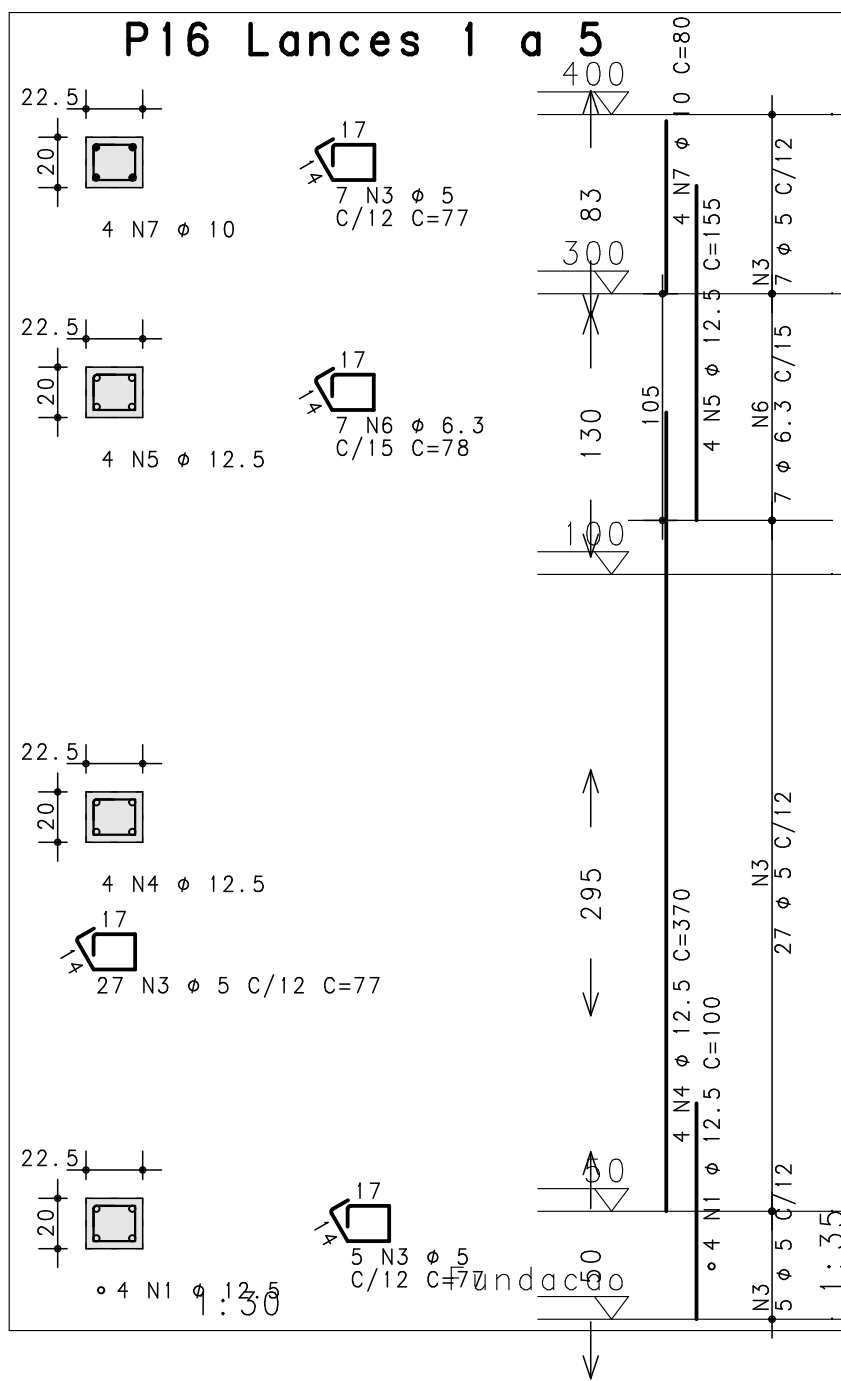
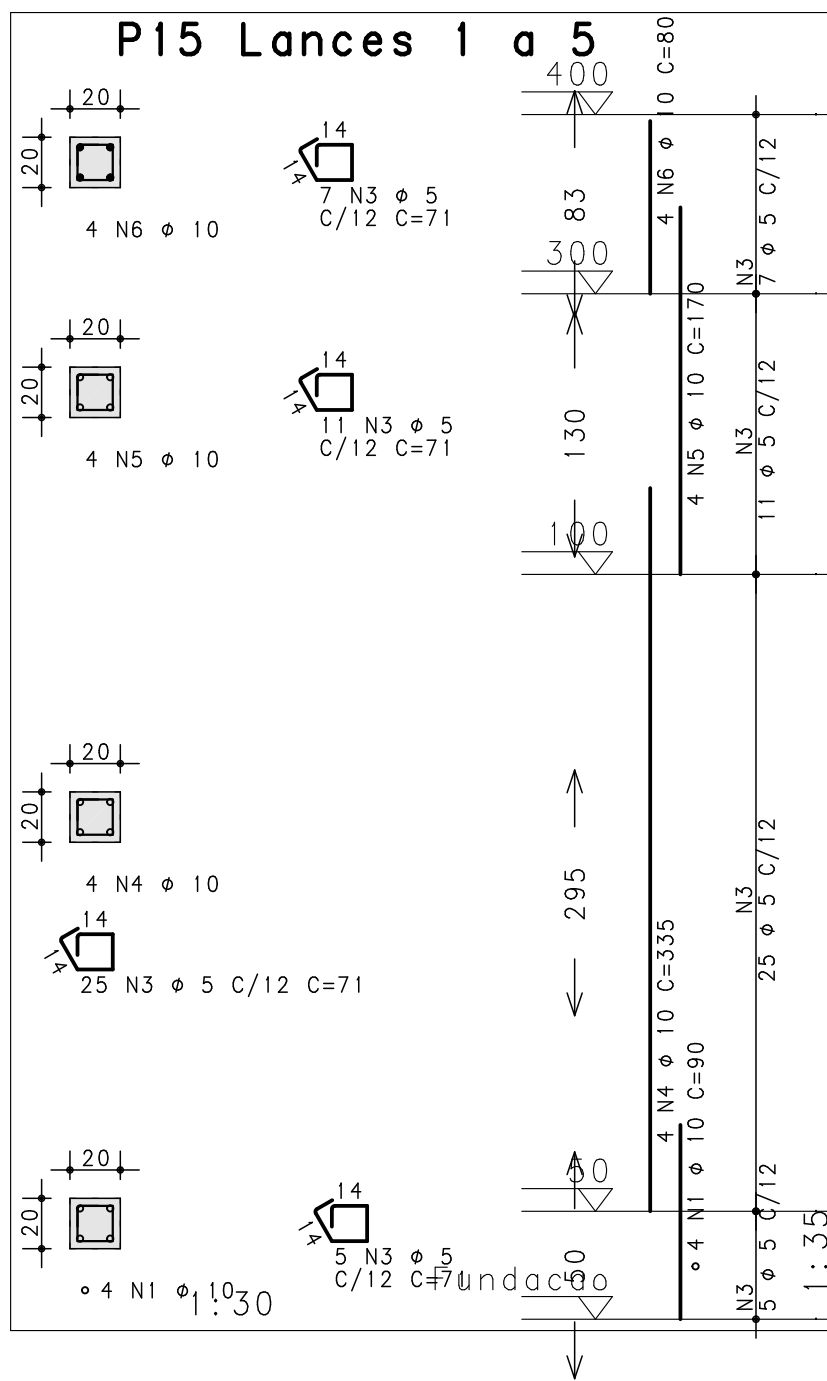
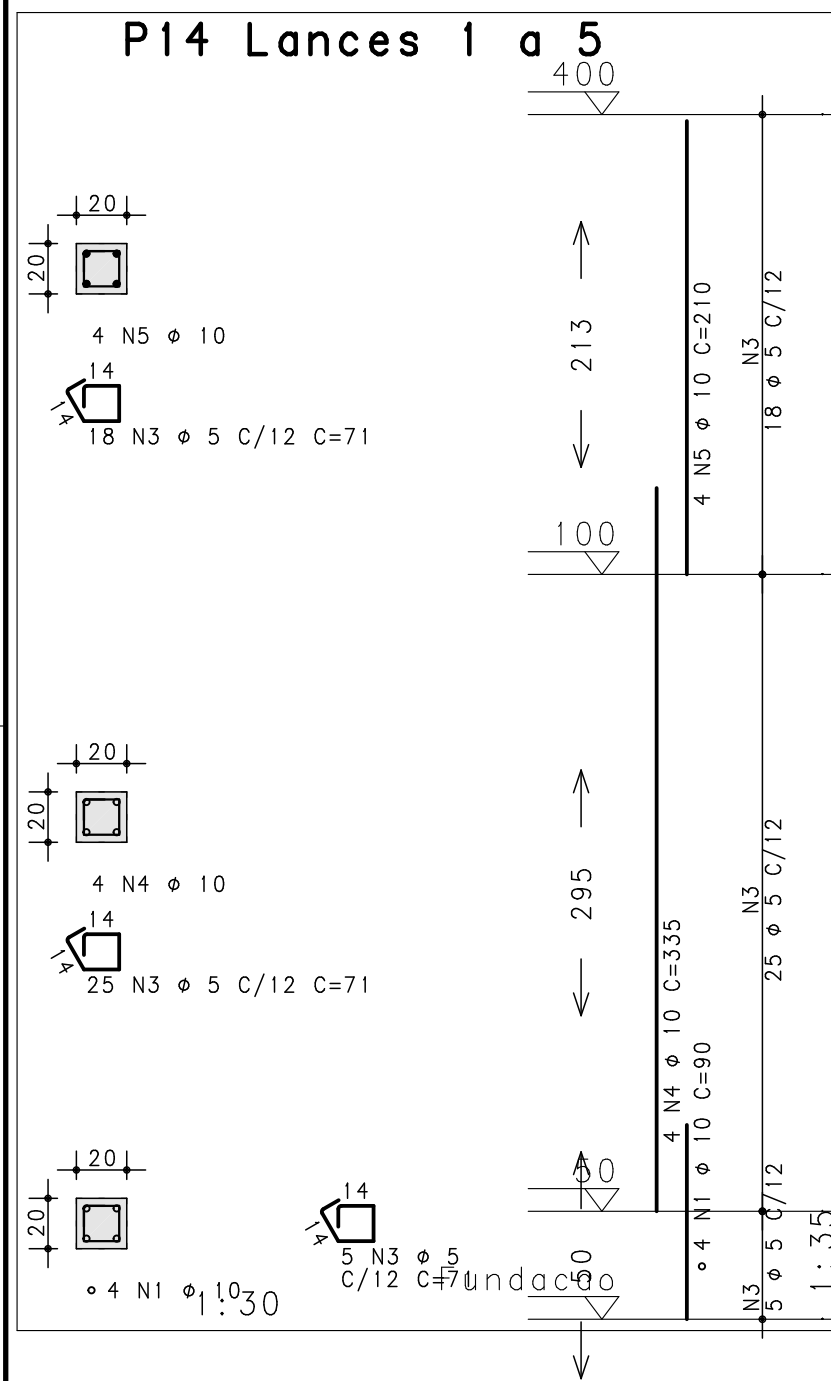


ACO	POS	BIT (mm)	QUANT	COMPRIMENTO (cm)	UNIT	TOTAL (cm)
P1=P4=P5=P8=P9=P10=P12=P17=P18=P19	Lances 1 a 4	(X10)				
50A	1	10	40	90	3600	
60B	3	5	410	71	29110	
50A	4	10	40	335	13400	
50A	5	10	40	127	5080	
P2=P3	Lances 1 a 4	(X2)				
50A	1	10	8	90	720	
60B	3	5	82	81	6642	
50A	4	10	8	335	2680	
50A	5	10	8	127	1016	
P6=P7=P21=P29=P33=P38	Lances 1 a 2	(X6)				
50A	1	10	24	90	2160	
60B	3	5	180	79	14220	
50A	4	10	24	292	7008	
P11	Lances 1 a 4					
50A	1	16	4	114	456	
50A	3	6.3	3	72	216	
50A	4	10	4	335	1340	
60B	5	5	36	71	2556	
50A	6	10	4	127	508	
P13	Lances 1 a 5					
50A	1	10	4	90	360	
60B	3	5	48	71	3408	
50A	4	10	4	360	1440	
50A	5	10	4	145	580	
50A	6	10	4	80	320	
P14	Lances 1 a 5					
50A	1	10	4	90	360	
60B	3	5	48	71	3408	
50A	4	10	4	335	1340	
50A	5	10	4	210	840	
P15	Lances 1 a 5					
50A	1	10	4	90	360	
60B	3	5	48	71	3408	
50A	4	10	4	335	1340	
50A	5	10	4	170	680	
50A	6	10	4	80	320	
P16	Lances 1 a 5					
50A	1	12.5	4	100	400	
60B	3	5	39	77	3003	
50A	4	12.5	4	370	1480	
50A	5	10	4	155	620	
50A	6	6.3	7	78	546	
50A	7	10	4	80	320	
P20	Lances 1 a 2					
50A	1	10	4	90	360	
60B	3	5	30	77	2310	
50A	4	10	4	292	1168	
P22=P34=P44=P45=P46=P47=P48	Lances 1 a 4	(X7)				
50A	1	10	28	90	2520	
60B	3	5	287	71	20377	
50A	4	10	28	335	9380	
50A	5	10	28	127	3556	
P23=P35	Lances 1 a 5	(X2)				
50A	1	10	8	90	720	
60B	3	5	98	71	6816	
50A	4	10	8	360	2880	
50A	5	10	8	185	1480	
P24=P25=P26=P30=P32=P39=P40=P41	Lances 1 a 5	(X8)				
50A	1	10	32	90	2880	
60B	3	5	384	79	30336	
50A	4	10	32	335	10720	
50A	5	10	32	100	3200	
50A	6	10	32	150	4800	
P27	Lances 1 a 2					
60B	1	5	28	71	1846	
50A	2	6.3	4	72	288	
50A	3	10	4	302	1208	
50A	4	12.5	4	100	400	
50A	5	10	4	29	116	
50A	6	6.3	4	192	768	

RESUMO ACO CA 50-60			
ACO	BIT (mm)	COMPR (m)	PESO (kg)
60B	5	1274	196
50A	6.3	18	4
50A	10	908	560
50A	12.5	29	7
50A	16	5	8
Peso Total 60B =			196 kg
Peso Total 50A =			600 kg



P1=P4=P5=P8=P9=P10=P12=P17=P18=P19 Lances 1 a 4
P2=P3 Lances 1 a 4
P6=P7=P21=P29=P33=P38 Lances 1 a 2
P11 Lances 1 a 4
P13 Lances 1 a 5
P14 Lances 1 a 5
P15 Lances 1 a 5
P16 Lances 1 a 5
P20 Lances 1 a 2
P22=P34=P44=P45=P46=P47=P48 Lances 1 a 4
P23=P35 Lances 1 a 5
P24=P25=P26=P30=P32=P39=P40=P41 Lances 1 a 5
P27 Lances 1 a 2



Rua Quinze de Novembro, 553/405
Pelotas - RS - CEP 96201-600
Telefone: (51) 32291500
e-mail: fernando@gsimch.com.br
e-mail: paulo@gsimch.com.br

Fernando Petrucci Gigante
Eng. Civil - CREA-RS 45232

Paulo Rogério Maffini Simch
Eng. Civil - CREA-RS 78208

2			
1			
0			
Rev	Data	Autor	Assunto

CONCRETO			SOBRECARGA PREVISTA		OBRA N.º	
fck = 250 kgf/cm²					0001	
CLIENTE			SECRETARIA DA SAÚDE-PELOTAS		DES. N.º	
OBRA			UBS Sanga Funda		010	
TÍTULO			Pilares 1-2		REV. N.º	
					00	
DATA	ESCALA	DESENHO	COORD.	ENG.º		
2/08/2015	1:30	UBS-PIL-010-R00				